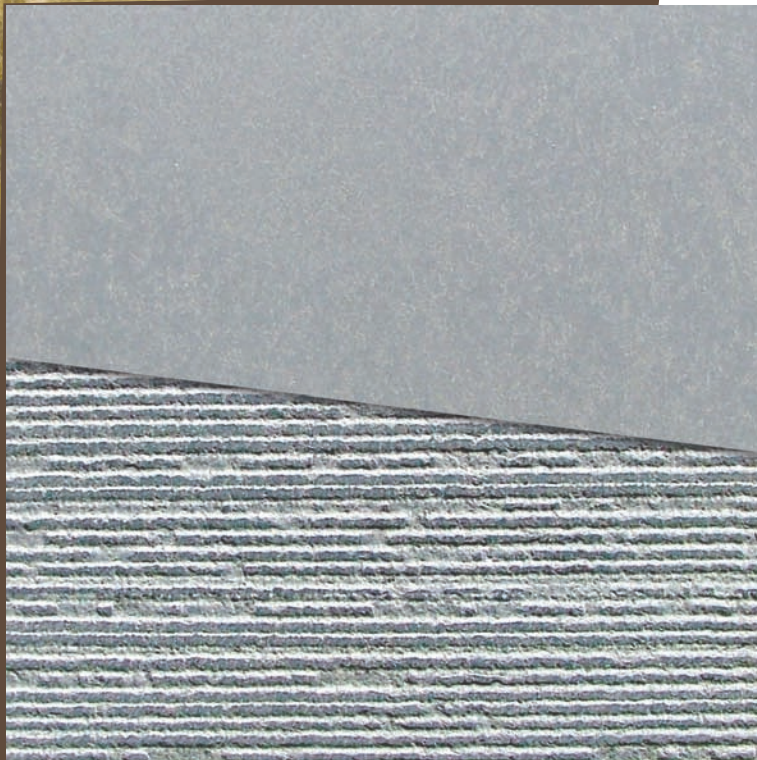


Allstone Basalt Dawn Grey

Registration No.: ALL0706 -1
Registration Date: August 2006



General Description

A high density basalt 'bluestone' with a 'slatey' steel grey colouring and a subtle mottled appearance. The stone has a fine to medium grain size with low porosity, high strength and high durability rating. Allstone Basalt (Dawn Grey) is considered a strong, durable and versatile material particularly suitable for locations such as pool surrounds and a range of other residential and commercial locations.

Property	Performance	Rating
Strength	Excellent	★★★★★
Durability	Excellent	★★★★★
Resistance to staining	Excellent	★★★★★
Resistance to wear	Excellent	★★★★★

Property Summary	Mean Value	Notes
Water Absorption – wt%	0.4	
Bulk Specific Gravity – t.m ⁻³	2.71	
Flexural Strength – MPa	Dry	23.7
	Wet	23.5
Modulus of Rupture – MPa	Dry	25.8
	Wet	27.7
Compressive Strength – MPa	Dry	219
	Wet	224
Resistance to Salt Attack – wt%	0.04	
Dimensional Stability - %	-	
Thermal Expansion - mm/mm °C x 10 ⁻⁶	-	
Abrasion Resistance – Ha	59	
Stain Resistance Rating	-	
Freeze-Thaw Resistance (% strength loss)	-	
Impact (cm)	-	

Consider for these uses	Honed	Spring Rain	Notes
Commercial Paving	✓	✓	S - R
Commercial Tiling	✓		S - R
Domestic Paving	✓	✓	S - R
Domestic Tiling	✓		S - R
Internal Cladding	✓	✓	A
External Cladding	✓	✓	A
Bench Top			
Landscaping	✓	✓	
Constructional / Monumental	✓	✓	
Artwork / Ornamental / Furniture	✓	✓	

Contact Details

Allstone Pty Ltd Telephone: +61 (0) 8 8344 5575
Attention: Mr Peter Wood Email: adelaide@allstone.com.au

Notes

- A - The anchor system should be validated in accordance with ASTM C1354
- R - Risk of slipping should be assessed for compliance with the appropriate standard.
- S - A Sealing system that is appropriate for stones intended use should be considered.

Disclaimer

The information reported in this certificate represents the typical properties of the stone in production at the time of the evaluation. Stone is a natural product and therefore these properties may vary. Data provided should only be considered as a guide to assist in initial selection. Additional testing may be required to confirm the suitability of the stone for a specific use or location. This certificate is current for a period of three years from registration date.

© Copyright 2006 All rights reserved